

Number 2 Canyon Trail System Development



Phase 3 Plan 2021 (via NOVA Grant)

- ▬▬▬▬▬▬ Phase 3 Proposed New Multi-Use Trails (6 mi)
- XXXXXX Phase 3 User-built trail to be decommissioned (1 mi)

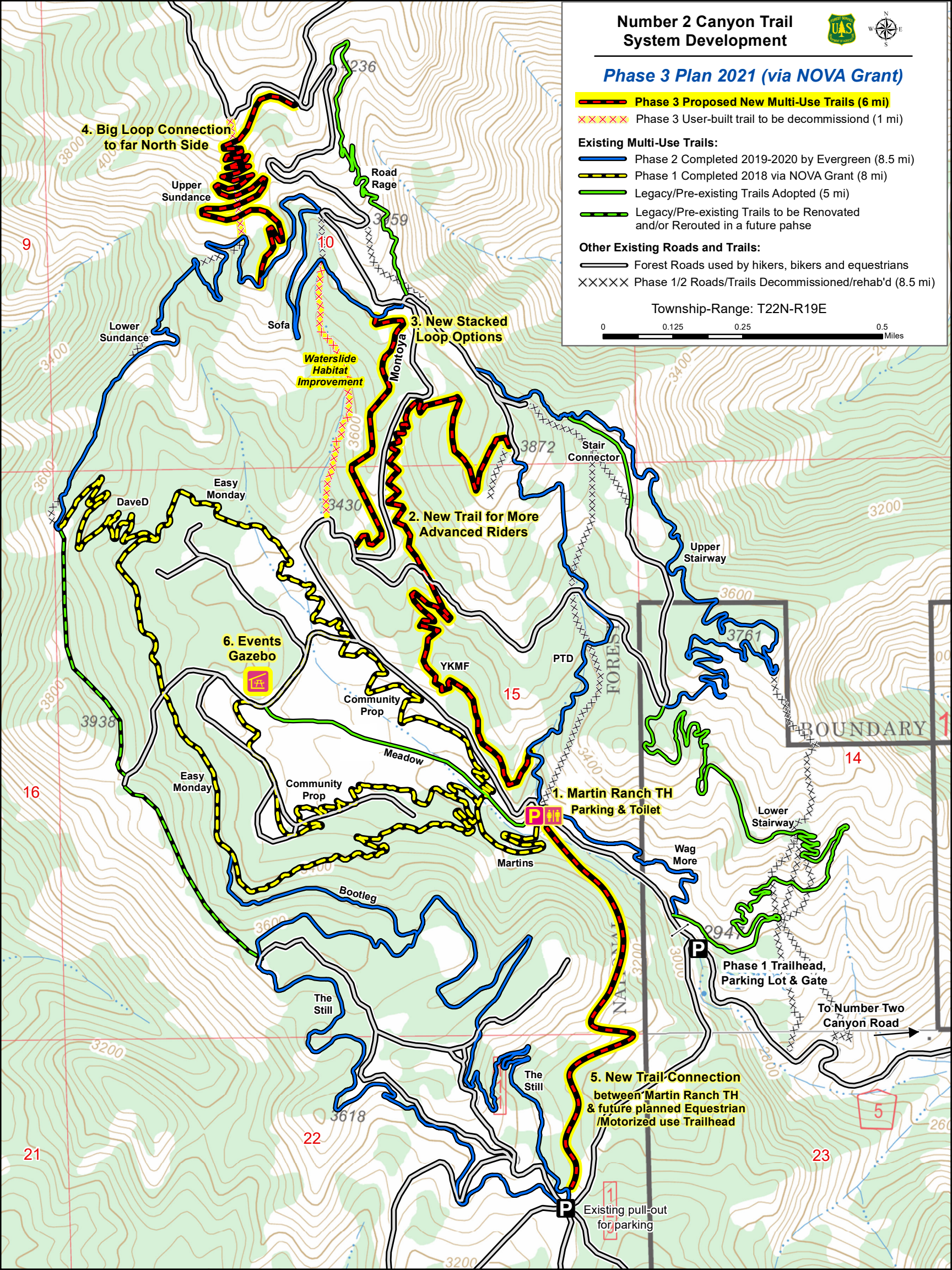
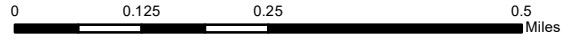
Existing Multi-Use Trails:

- ▬▬▬▬▬▬ Phase 2 Completed 2019-2020 by Evergreen (8.5 mi)
- ▬▬▬▬▬▬ Phase 1 Completed 2018 via NOVA Grant (8 mi)
- ▬▬▬▬▬▬ Legacy/Pre-existing Trails Adopted (5 mi)
- ▬▬▬▬▬▬ Legacy/Pre-existing Trails to be Renovated and/or Rerouted in a future phase

Other Existing Roads and Trails:

- ▬▬▬▬▬▬ Forest Roads used by hikers, bikers and equestrians
- XXXXXX Phase 1/2 Roads/Trails Decommissioned/rehab'd (8.5 mi)

Township-Range: T22N-R19E



4. Big Loop Connection to far North Side

3. New Stacked Loop Options

2. New Trail for More Advanced Riders

1. Martin Ranch TH Parking & Toilet

5. New Trail Connection between Martin Ranch TH & future planned Equestrian / Motorized use Trailhead

6. Events Gazebo

To Number Two Canyon Road

Existing pull-out for parking

Phase 1 Trailhead, Parking Lot & Gate

BOUNDARY 1

NATIVE FOREST

NATIVE FOREST

9

16

21

10

15

22

14

23

5

236

3759

3872

3600

3761

2947

3430

3400

3400

3600

3600

3600

3600

3600

3618

3200

3200

3200

00

260

260

260

260

260

260

3800
4000

3400

3600

3800

3600

3938

3400

3600

3200

3200

3200

3200

3400

3600

3600

3600

3400

3400

3000

3200

3000

3000

3000

3400

3600

3600

3600

3600

3600

3600

3600

3600

3600

3600

3400

3600

3600

3600

3600

3600

3600

3600

3600

3600

3600